

CRÊPE MAKER

€310.00

SKU:

7518.0165

Introducing our innovative crepe maker!

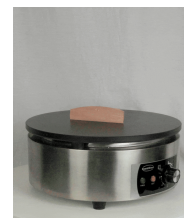
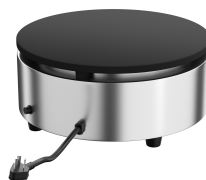
This versatile and handy crepe maker is ideal for on-site catering or events. The compact design ensures easy placement and mobility, yet it delivers powerful performance to prepare delicious crepes. Additionally, it has a modern look that suits any setting. Dimensions are 400x400x178 mm (LxWxH) - temp. +50/+300°C - consumption 3 kW - weight 15.7 kg.



Key features:

- **Cast iron griddle with Teflon coating:** prevents sticking and facilitates cleaning.
- **Adjustable temperature:** precise control over the baking process.
- **Slim and compact:** fits effortlessly into any kitchen, optimising usage area.
- **Includes wooden spatula:** for easy spreading of batter.

Whether you are a professional chef or an avid home baker, this crepe maker is designed to meet all your baking needs efficiently and stylishly.





EAN code	6153304429429	Width (mm)	400
Depth (mm)	400	Height (mm)	178
Material	Stainless steel Aisi 201	Accessories included	Wooden spatula
Parcel ready	Yes	Gross Weight (kg)	16.7
Net weight(kg)	15.7	Particulars	Cast iron plate with Teflon coating
Voltage (Volt)	230	Electrical power (kW)	3
Model tabletop/ freestanding/drop-in	Tabletop	Diameter (mm)	400
Brand	COMBISTEEL	Temperature range (°C)	+50/+300
Plug and play (EU only)	Yes		

