

NACHO WARMER.

€380.00

SKU:

7518.0180

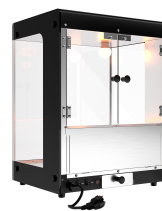
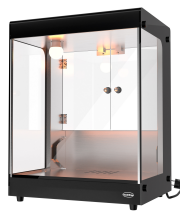
Introducing our Combisteel nacho warmer!

Our nacho warmer is a versatile solution perfect for various applications, whether you're at a food festival, cinema, or organising a sports event. This large unit ensures quick serving of delicious hot nachos, with a cycle time of approximately 4 minutes. The slim design adds a professional touch to any setting. Dimensions are 500x500x700 mm (LxWxH) - consumption 0.19 kW - weight 16.7 kg.

Key features:

- **Efficient heating:** keep large quantities of nachos warm for a long time at a constant temperature.
- **Large design:** suitable for intensive use at events and festivals.
- **Easy filling:** ease of use thanks to 2 hinged rear doors.
- **Easy cleaning:** quick cleaning thanks to the removable crumb tray and stainless steel casing.

Whether you are an experienced caterer or organising a cosy movie night, this nacho warmer is designed to meet your needs reliably and stylishly.





EAN code	6153304476461	Width (mm)	462
Depth (mm)	365	Height (mm)	588
Material	Hardglas	Color	Black
Parcel ready	No	Gross Weight (kg)	17.7
Net weight(kg)	16	Voltage (Volt)	230
Frequency (Hz)	50	Electrical power (kW)	0.19
Model tabletop/ freestanding/drop-in	Tabletop	Cycle Time (sec.)	4 minutes
Brand	COMBISTEEL	Plug and play (EU only)	Yes
Lights	Yes		

CombiSteel

